



DARK SITE

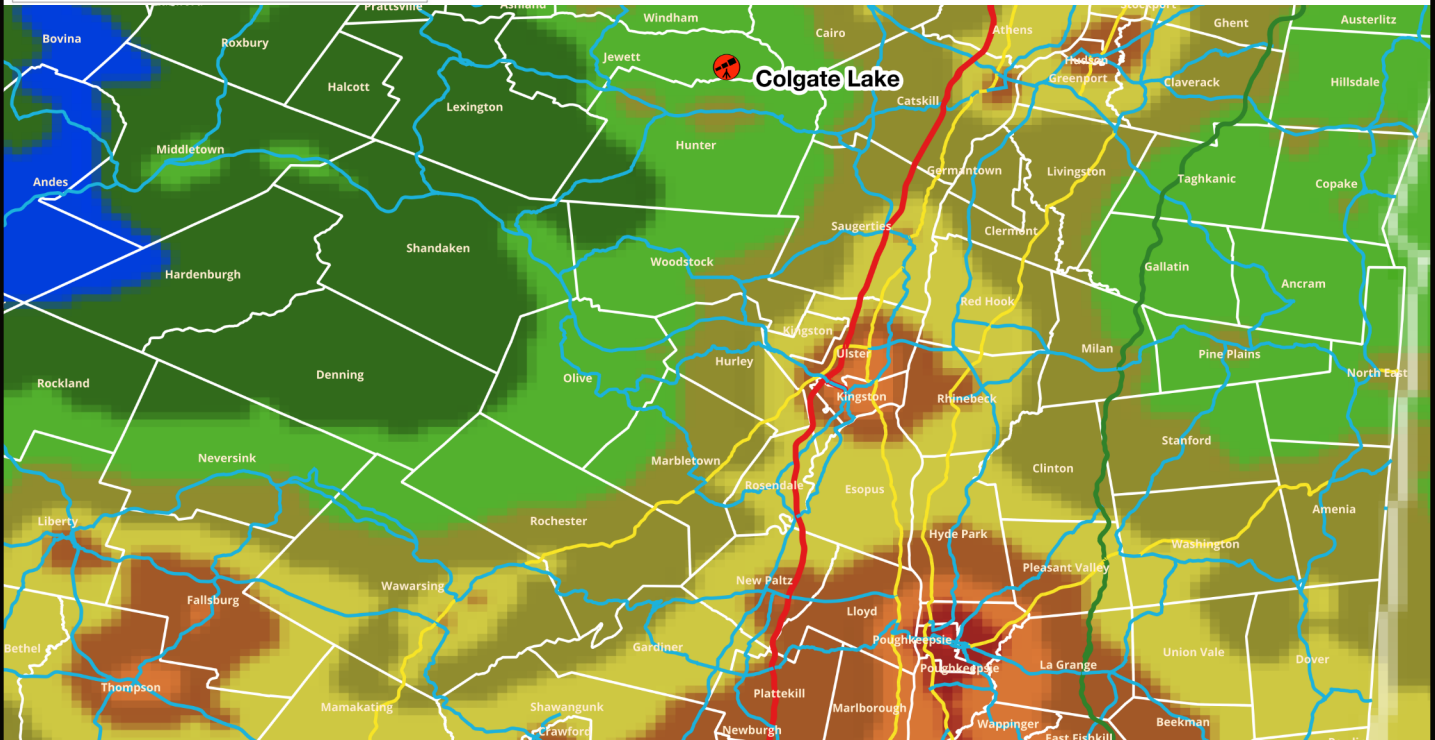
DEC Website



Google Maps



Colgate Lake Wild Forest



Dark Level	Estimated at Bortle 4 due to possible, moderate light leakage from the houses west of the site and proximity to Hunter.
Site	Colgate Lake Wild Forest (Website)
Management	New York DEC
Address	County Route 78 (Colgate Rd), Jewett NY 12424 (Google Maps)
Season	Year-round
Phone	(607) 652-7365
Permit cost in season	Free. Parking is free and close by, open 24x7. The accessible parking lot is particularly convenient, and useful to unload your equipment. You can then move your car to either the Lake or Trailhead parking lots.

Comments: This is a popular swimming and fishing lake used mostly by locals. It's near a small colony of houses along Colgate Road, but otherwise reasonably isolated and sheltered.

The site is regulated as a Wild Forest, which means 24x7 free access year-round. "Primitive" camping is permitted at 6 designated sites for up to 3 consecutive nights by groups of less than 10 persons on an "as available" basis. All are north of the lake. Parking in view of the lake is not permitted.

The site is close to Hunter and Windham, meaning there is plenty of accommodation nearby if primitive camping doesn't appeal.

Your best bet is to unload at the accessible parking lot, which connects via short, well-graded paths to a small fishing pier and to a footbridge over the East Kill outlet. Beyond that you will need to traverse primitive paths, You should be prepared to set up on uneven ground and bring your own power.

Mid-Hudson Astronomical Association has educated the public and supported amateur astronomers since 1985. We partner frequently with local organizations to conduct observing parties and educational events while enjoying the camaraderie of amateur astronomers from all walks of life. We sponsor monthly, public star-parties year-round at Taghkanic State Park, and a seminar series at SUNY New Paltz: midhudsonastro.org





Cardinal directions are approximate (see bottom center window in each of the above images for accurate compass bearing). Note that observing over water can improve or degrade viewing conditions. Broadly speaking, the best viewing takes place when water surface temps are close to air temps. Warm evening temps can cause lake fog; colder temps may cause dew. You should be prepared with dew shields and dew heaters.

Colgate Lake Wild Forest

