



# DARK SITE

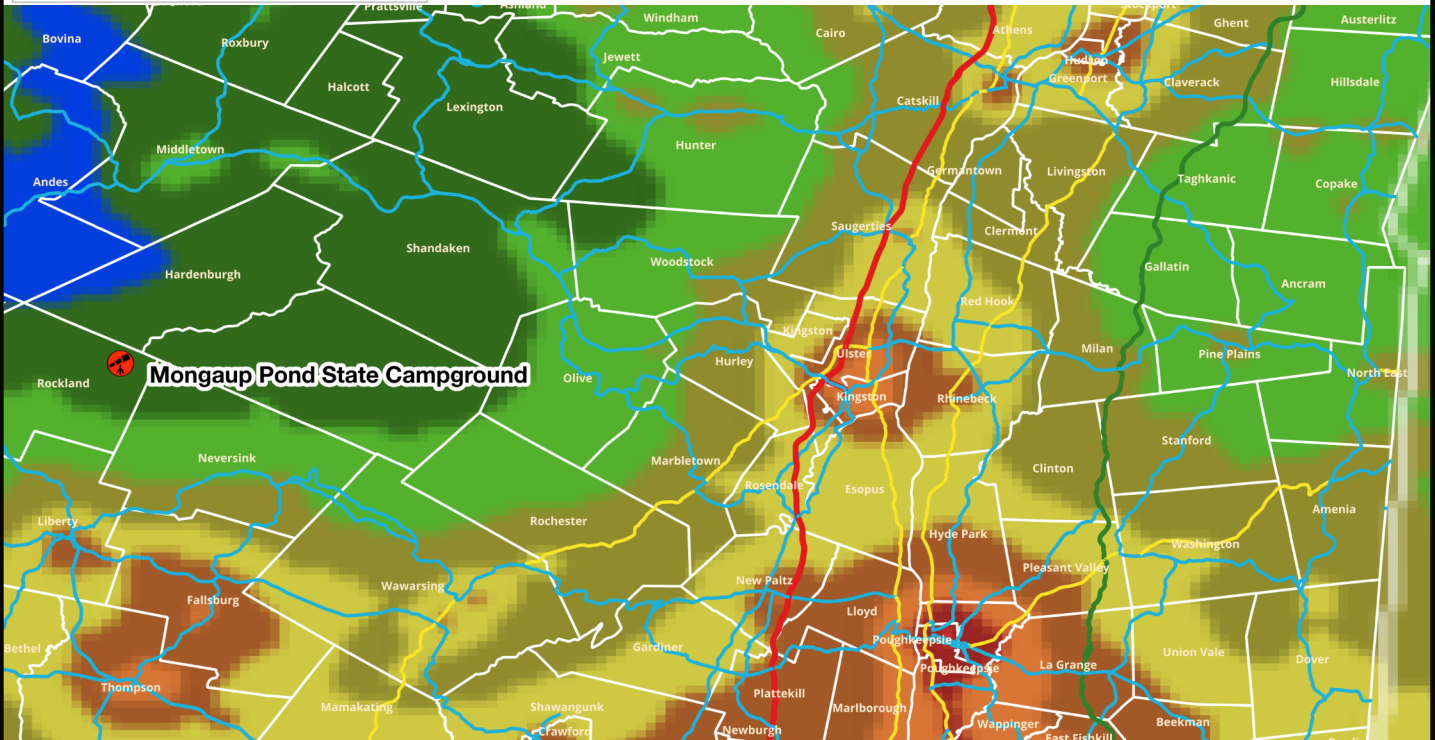
DEC Website



Google Maps



## Mongaup Pond Campground



|                              |   |
|------------------------------|---|
| <b>Dark Level</b>            | Estimated at Bortle 3   |
| <b>Site</b>                  | Mongaup Pond Campground and Day Use Area ( <a href="#">Website</a> )                                      |
| <b>Management</b>            | New York DEC  |
| <b>Address</b>               | 231 Mongaup Pond Rd<br>Livingston Manor, NY 12758<br>( <a href="#">Google Maps</a> )                      |
| <b>Season</b>                | The weekend prior to Memorial Day Weekend through Columbus Day Weekend.                                   |
| <b>Phone</b>                 | (845) 439-4233  |
| <b>Permit cost in season</b> | \$22 per night. Advanced reservation required before 5 PM on the day of reservation, check-in before 9 PM |

**Comments:** Mongaup Pond is a popular campground in an isolated part of the Catskills with very dark skies. The campground is built along the western bank of the pond, which provides fabulous sight lines east of the meridian. Suggested observing locations include the fishing pier and the pond beach, both close to the campground entrance (see map overleaf).

In Season, you must have a valid camping pass to stay after dark. Sites can be reserved up to 5 PM on your day of arrival. You must check in between 2 PM and 9 PM.

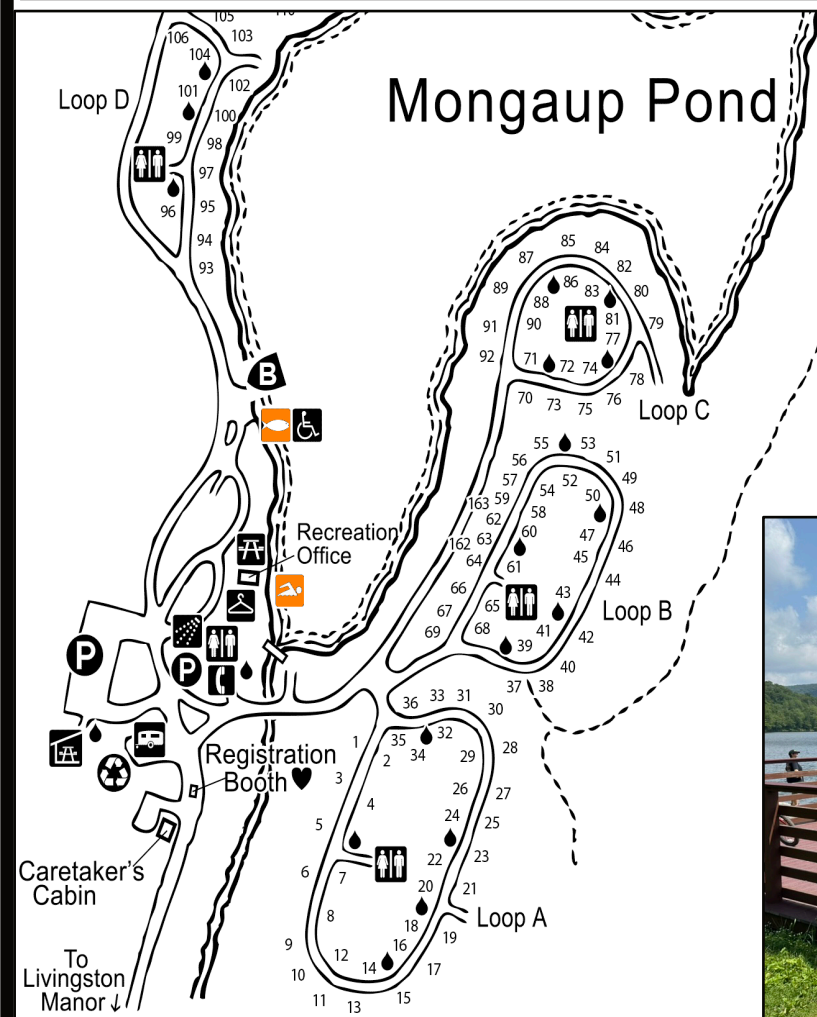
Out of season the access roads remain open to cars if clear of snow. This will allow you to drive and park near your observing site. Off-season access is 24x7 and free. Camping facilities are generally closed off-season, but a limited number may be available. Check with campsite.

Mid-Hudson Astronomical Association has educated the public and supported amateur astronomers since 1985. We partner frequently with local organizations to conduct observing parties and educational events while enjoying the camaraderie of amateur astronomers from all walks of life. We sponsor monthly, public star-parties year-round at Taghkanic State Park, and a seminar series at SUNY New Paltz: [midhudsonastro.org](http://midhudsonastro.org)





Cardinal directions are approximate (see bottom center window in each of the above images for accurate compass bearing). Altitude to the crosshair (in degrees) is shown in the right hand window. Note that observing over water can improve or degrade viewing conditions. Broadly speaking, the best viewing takes place when water surface temps are close to air temps. Warm evening temps can cause lake fog; colder temps may cause dew. You should be prepared with dew shields and dew heaters.



The two best observing locations are the fishing pier and the beach, marked with orange icons on the map. The pier is extremely convenient to parking and offers a hard, level surface. It may not be stable enough, however, for long-focal-length telescopes and, in season, may be more affected by headlights from campers driving into Loops D-G.

The beach offers similar eastern views, a lower western horizon, and is further from the road. You will need to site the telescope on packed sand, which should prove more stable than the pier. We recommend bringing tiles or boards to support the legs of your tripod.

